



**SHIKUMBU LODGE**  
**MAHLATHINI PRIVATE GAME RESERVE**  
**KRUGER NATIONAL PARK**  
**FRACTIONAL OWNERSHIP RESALE**

**Shikumbu Lodge is an unbonded privately syndicated five bedroom (all en-suite) bush lodge uniquely situated on an exclusive 21ha portion of Mahlathini Private Game Reserve. Mahlathini adjoins the Kruger National Park and the Great Letaba Game Reserve (Letaba Ranch) a short distance (7km) north of Phalaborwa. Shikumbu Lodge itself shares a common boundary with the Kruger National Park and offers the ultimate in bush privacy.**



A Totally Secluded And Tranquil Bush Hideaway

**Mahlathini Private Game Reserve**

Mahlathini Private Game Reserve is low density wildlife reserve with only one residence permitted per 21 ha. It is the only private game reserve that shares common boundaries with both the Kruger National Park and the 50 000ha Big Five Great Letaba Game Reserve (also known as Letaba Ranch). An appealing feature of Mahlathini Private Game Reserve is that it is only 15 minutes from the Phalaborwa entrance gate to the Kruger National Park making access to the Satara, Mopane, Letaba and Olifants camp regions easy. It is also conveniently close enough to participate in the full spectrum of South African National Parks activities offered from the Phalaborwa entrance gate. These include open vehicle day and night drives, bush braais, guided walking safaris, mountain bike trails and sleepovers at the Sable Dam Hide. In addition a whole host of bush tracks

(previous SANParks management roads) have been opened up to the public in the Phalaborwa region of the Kruger for use with high clearance vehicles such as SUV's. Because very few other vehicles are encountered on these tracks it makes traversing in the Kruger in this area seem like exploring your own private game reserve.

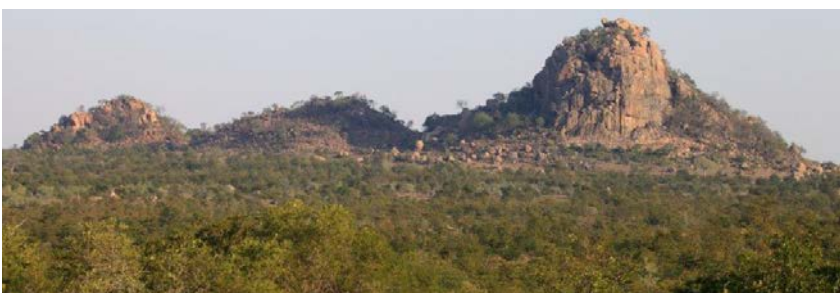
From Shikumbu Lodge one can easily experience **seven different Kruger Park ecozones**. These are Mopane/Bushwillow Woodlands, Sandveld, Mopane Shrubveld, Lebombo Mountain Bushveld, Olifants Rugged Veld, stunted Knob-thorn Savannah and the riverine ecozones of the Letaba and Olifants rivers.

The entrance gate to Mahlathini Private Game Reserve is only 7 km north of Phalaborwa. The town boasts a variety of retail stores such as Woolworths, Checkers, Pick and Pay, Spar, Game etc, numerous restaurants, medical facilities as well as recreational amenities like the Hans Merensky golf course. Phalaborwa is an ideal springboard for direct access to the Bilene and Xai-Xai areas of the Mozambique coast via the Kruger's Gariyondo border post and Mozambique's Limpopo National Park.

Mahlathini Private Game Reserve is easily accessible from almost anywhere in the world being situated within 15 minutes from Phalaborwa's Kruger Park Gateway Airport. South African Airlink provides direct flights from Johannesburg International Airport (ORT) and car hire is available at the airport.



**Shikumbu Lodge** *“Buildings too are the children of the sun and earth”* Frank Lloyd Wright  
Shikumbu Lodge is an impressive privately syndicated bush residence set on an exclusive 21ha portion of Mahlathini Private Game Reserve. This Lodge with its towering thatch roofs is hidden amongst a thicket of established mopane, marula, bushwillow, black monkey thorn and knobthorn trees adjoining a large seasonal waterhole that is frequented by a variety of game including elephant, buffalo, zebra, wildebeest and eland. Predators such as leopard, hyena, wild dog, lion, and cheetah have been seen from the game viewing hide. The waterhole attracts an interesting variety of birds including raptors such as fish eagles, martial eagles, black-chested snake eagles etc.



The Lodge is named after Shikumbu hill situated a short distance away in the Kruger Park. This natural Kruger landmark comprises a set of three koppies of ancestral significance that was once home to the chiefs



of an iron age community that resided at another nearby hill called Masorini. Masorini dates back to the 19<sup>th</sup> century and has the remnants of iron age foundries that smelted and forged iron artifacts. It is the Kruger's second most important archaeological site after Thulamela.

Shikumbu Lodge is comprised of three separate buildings representing the three koppies of Shikumbu hill. These buildings are a three bedroom chalet, a two bedroom chalet and the main building that serves as the common living area. The three buildings are linked together by raised wooden walkways.



The distinctive roof design found its inspiration in the putty grey and ochre colored spires of the tall termite mounds that are so abundant in this region of the Kruger National Park.



The main building living area incorporates an open plan lounge/dining/kitchen area, an outdoor dining facility, laundry/storeroom and an elevated deck with views towards the Kruger National Park.



All bedrooms and living areas are air-conditioned and lead onto expansive cool shaded verandas with deep overhanging thatch roofs supported by old Leadwood tree trunks

All five bedrooms have en-suite bathrooms. The bathrooms of the main bedrooms of each chalet offer private views over the surrounding bush and also open to outdoor showers for a “back to nature” bathing experience.

A wooden deck leads off the lounge veranda to a circular rim flow pool with views to the waterhole and Kruger Park beyond. The kitchen and lounge open via stack doors and windows onto a shaded lawn that merges with an elevated tree-sheltered boma with fire pit. The boma is married to a deck that overlooks a natural wallow in which warthogs and other animals take mud baths during the rainy season. Leading off the boma is a 40m long raised wooden walkway that meanders at canopy





level through a Black monkey thorn, false thorn and sickle bush thicket to a game viewing hide on the edge of the waterhole.



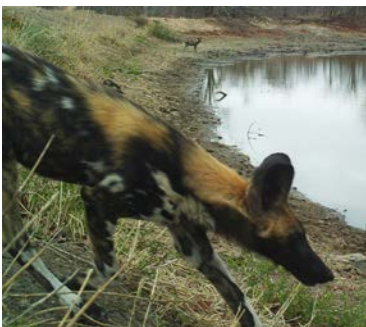
The entire lodge is surrounded by an electric fence. Shikumbu Lodge is supplied with 3 phase power from Eskom via underground electrical cables. Tap water is clean and potable and is piped in from a provincial waterworks. A latte covered carport provides shaded parking for 4 cars.

### Shikumbu Wildlife Experience

Shikumbu Lodge provides a truly exciting spectrum of very private wildlife experiences with activity being dictated by the rhythm of life in the bush. The reserve adjoins the Big Five areas of the Kruger National Park and Letaba Ranch Game Reserve. Game roaming in the reserve comprises a mix of resident and transient species. Transient species enter and leave MPGR via fence line holes and breaks.



Game recorded at Shikumbu Lodge includes Lion (transient), Wild dogs (transient), Cheetah (transient rare), Leopard, Spotted Hyena, Jackal, Honey Badger, Caracal, Buffalo, Elephant (transient frequent), Eland, Impala, Kudu, Waterbuck, Blue Wildebeest, Warthog, Zebra, Giraffe,



Grey Duiker and Steenbok. A variety of small mammals occur in the reserve. Birding is superb especially during the summer months when seasonal rains fill the waterhole.

### **Shareholder structure and lodge use**

There are a total of ten shareholders in Shikumbu Lodge. Each shareholder enjoys 5 weeks right of use per annum. The annual use periods are chosen by the shareholders from a calendar that is circulated to them approximately 6 months in advance of the commencement of the following calendar year. Shareholders are at liberty to exchange weeks amongst themselves. Individual use periods (weeks) run from Friday to Friday. Invitees may use the lodge subject to agreeing to abide by the rules of the lodge and the game reserve. A domestic worker services the lodge from Monday to Friday. A pool service tends to the pool and "garden" area.



### **Fractional Investment Opportunity**

To date none of the original shareholders has sold out of this lodge in the 11 years since it was first opened for occupation. This is testimony to their love for this unique property. A syndicate slot of 5 weeks has become available for purchase due to a shareholder emigrating. Shikumbu Lodge in Mahlathini Private Game Reserve represents a special lifestyle investment opportunity for serious wildlife enthusiasts who value private game viewing moments whilst in the African bush. The asking price is R790 000.

**For further details call Mike Whiting on +27825515276 or email [michaelwhiting43@gmail.com](mailto:michaelwhiting43@gmail.com)**